



**VESTEL**

Refrigerators  
2015-2016





Company Profile

2



Global Operations

3



Features

4-7



Designs

8-21



Glass Doors

22-24



Refrigerators

25-83



Specifications

84-92



Addresses

93

## Company Profile



Vestel City, which comprises nine plants located in Manisa, is amongst the biggest industrial complexes of the world.

As one of the leading enterprises in Turkey, Vestel is a major player in consumer electronics, mobile technologies, household appliances, professional displays and LED lighting with renowned products, including refrigerators, washing machines, cooking appliances, dishwashers, air conditioners, water heaters, television sets, educational, hospitality and digital signage solutions, digital set-top boxes, tablet PCs, and smart phones.

The company is recognised for its cutting-edge designs, high product quality, large production capacity, and superior market share growth.

Vestel is one of the ten biggest household appliance manufacturers in Europe, with its new product development ability, flexibility in production, and fast response to clients' demands.



Operating with an annual capacity of 3.2 million units, the company's two refrigerator plants produce a variety of models ranging from french door, no-frost, combi, double door, single door, to table top fridges and freezers, as well as built-in models.

Achieving similar success with washing machines, Vestel is able to produce 2.5 million units a year, with models ranging from 4 kg to 9 kg drum capacities. The group added washer dryers to the product range in 2012. The plant for cooking appliances operates with an annual capacity of 2,150,000 units, producing free-standing cookers, built-in hobs and ovens.

The household appliances product range includes free standing, semi and fully integrated dishwashers. The plant has the capacity to produce 1 million units a year.



In addition, the air conditioner factory is capable of producing 750,000 units of split-type models.

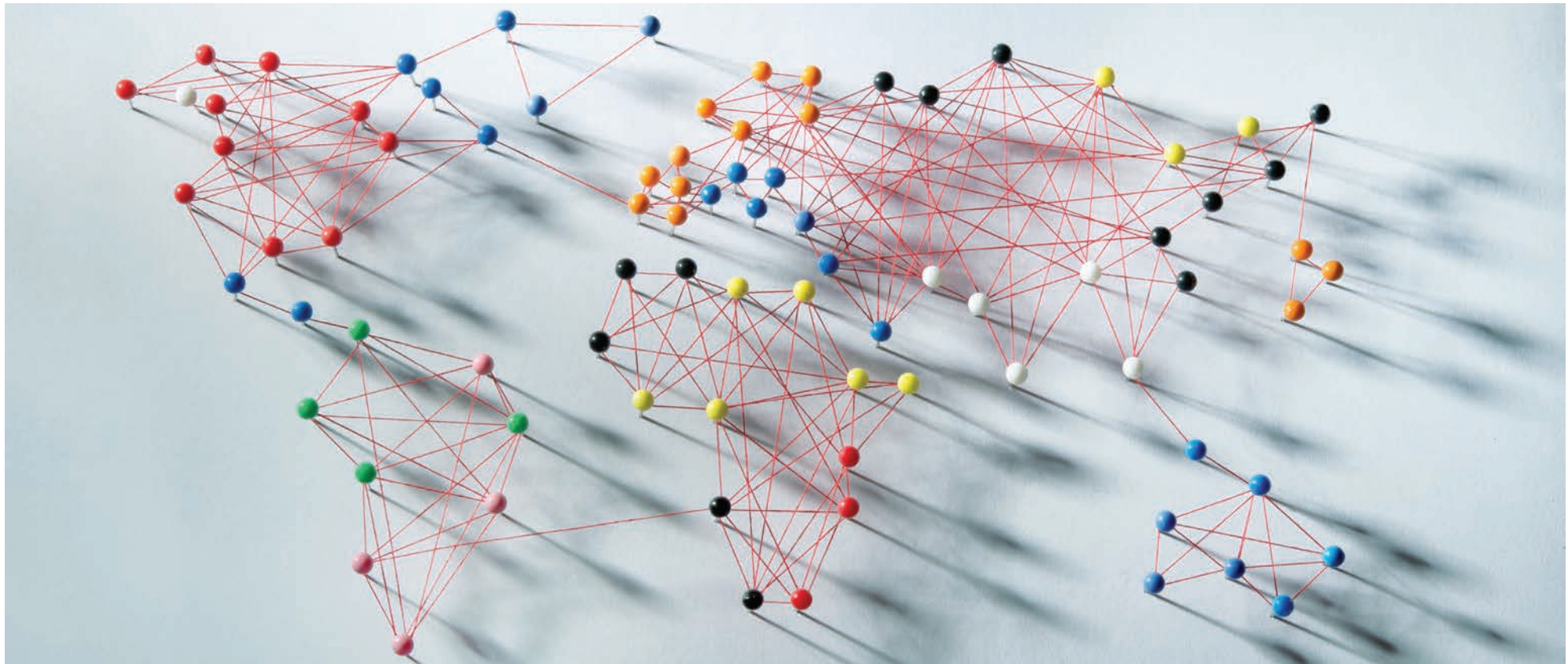
Vestel is the first company in Turkey operating two manufacturing plants in Russia for the production of refrigerators, washing machines, and televisions with the aim of becoming a leader in CIS countries.

Vestel Trade, the company responsible for the marketing and sales of Vestel products overseas, exports 73% percent of its production under leading Japanese and European brands to 151 countries.

Vestel Trade has achieved export sales of 8.3 million units of electronics and 4.8 million units of household appliances.

Distributing its products to seven continents, Vestel takes its place as a world-class company.





Manufacturing & Assembly Plants

Refrigerator, Washing Machine, Dishwasher, Cooking Appliances, Air Conditioner, Water Heater, Manisa, Turkey

Refrigerator, Washing Machine – Alexandrov, Russia

LED TV, HD, IP/OTT PVR Set-top Boxes – Manisa, Turkey

Professional Displays, Tablet PC, Smart Phone – Manisa Turkey TV – Alexandrov, Russia

Marketing & Sales Companies

Vestel Trade Co, Turkey

Vestel France, France

Vestel Germany GmbH, Germany

Vestel UK, The UK

Vestel Iberia, Spain

Gruppo Industriale Vesit, Italy

Vestel Benelux, The Netherlands

Vestel CIS Ltd, Russia

Vestel Electronica, Romania

Vestel Scandinavia, Finland

Vestfrost Household, Denmark

Vestel Central Asia, Kazakhstan

United Technical Services, Slovakia

Vestel Poland, Poland

R&D Centers

Manisa, Turkey

Istanbul, Turkey

Bristol, UK

Shanghai, China



Features

Ice



Flat



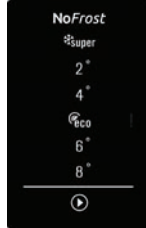
TT



IMD-Display



Flaty



I-Display



Bianca



Quadro



Luna



Electronic Indicator

- Freezer Temperature Adjustment
- Refrigerator Temperature Adjustment
- Super Freeze
- SuperCool
- Holiday Function
- Eco Mode
- Door Open Alarm



Reversible Doors

Vestel refrigerator doors can be opened to the left or right with a simple adjustment.



Removable Door Racks

Door racks can be repositioned to provide extra space for bottles and packages of various heights.



Water Dispenser

Cold water is in easy reach with the press of a button on the control pad.



Season Switch

The switch enables the refrigerator to operate at low ambient temperatures without losing its performance. Refrigerator can also operate under subnormal (SN) ambient temperatures.

## Features



### Anti Bacterial Gasket

The gasket prevents growth of bacteria and microorganisms.



### Safety Glass

The tempered glass on top of the crisper can hold up to 40 kg. weight.



### Icematic

The cube drop-down mechanism prevents ice from sticking on hand. Closed icing compartment stores and preserves ice-cubes. The tray makes handling of ice-cubes easier.



### CFC and HCFCFree

Refrigerants used in Vestel appliances do not contain CFC. HCFC free models are also available.



### Freezing Tray

The tray provides space for storing and freezing small fruits and vegetables in their original form. Ice box can also be stored on the freezing tray.



### Freezer Door Indicator

The red indicator warns user when freezer door is left open.



### Turbo Fan

The fan is integrated in the refrigerator, and is directly activated by the compressor. It ensures even circulation of cool air.





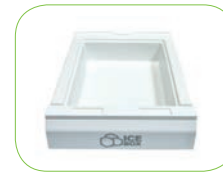
Cooling Battery



Bottle Shelf  
The Shelf enable horizontal storage of bottles.



Magic Box



Ice Tray

Door Racks



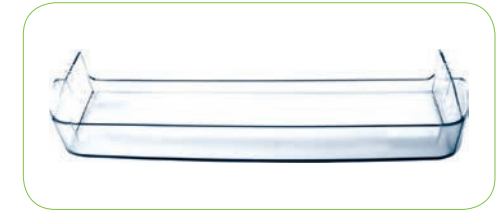
VESTEL



ERA



ERA - Hot Stamp



ARC



ARC with add - on



CUBE



CUBE with add - on



Built - in

I Design



Vestel (V)



Slimline (S)



Softline (F)



Coolline (C)



Diamond



Classic (K)



Elegance (E)



Wing



Z Design



Larix



Flatline



FIn Wave



Dnz



Mebak



Chain



Tria



Curly



HC Orca



Aremi Due



Aremi Uno





Curve



Cast



Lever



Classic (K)



Round



Softbar



Pole



Cut - Pole



Vestel (V)



Slimline (S)



Softline (F)



Coolline (C)



Classic (K)



Flatline



Diamond



S - Line DNA



S - Line



Level



S - Line Flower





Refrigerators





# GT 850

Stainless Steel Sleek Exterior

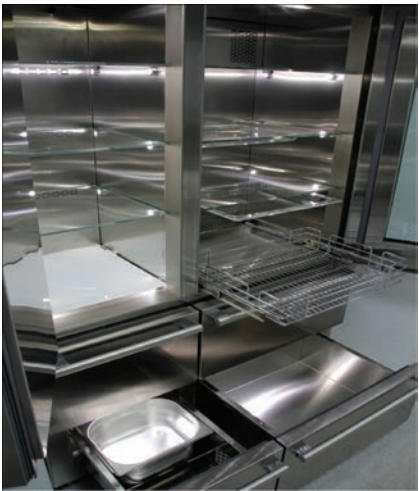
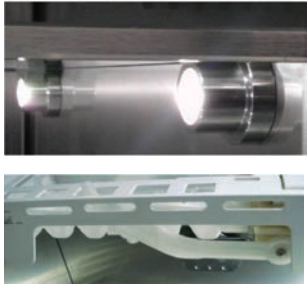
See-Through Door

Easy to Service

Front-Access Leveling

Self-Closing Drawers

Capacitive-Touch User Display



6 mm Tempered Glass Shelves

Slides for Oven Trays

Sliding Bottle Tray

 No Frost



## GT 850

---

### Technical Data

Product Dimensions (HxWxD cm): 212x121x65

Gross / Net Volume: 820 lt. / 713lt.

Refrigerator / Freezer Net Volume : 466lt. / 247lt.

### Standard Features

No Frost

Built In Compatible with Optional Side Panels

3 Temperature Zones

Electronic Display

Automatic Ice Maker

Vacuum Insulation Panels

Argon Filled Triple-Pane Glass





# GT/N 910

### Convertible Compartments

Bottom compartments of the refrigerator can be converted from freezer to fridge mode, or vice versa, on demand.

### DCTE

Equipped with double compressors and two evaporators, it employs separate air circulation for fridge and freezer compartments so that taste and odor transfer between the fridge and freezer compartments is prevented. Furthermore, the vegetables are kept fresh longer.

### Cold Wrap Cooling

Vestel French Door cooling system is a combination of two cooling systems. Cooler Compartment has Cold Wrap cooling system, as the circulating cold air wraps the food in the fridge compartment. This minimizes the heat transfer from the walls and ensures the food to stay fresh longer.



### Superior Internal Illumination

Additional to the hidden LED lighting on the cabinet, door integrated LEDs from the sides provide superior illumination.

### Self-Close Fresh Zone

Special sliding rails ensure easy closure of the drawers.

### Stainless Steel Add-Ons on Fridge Balconies

No Frost



## GT/N 910

### Technical Data

Product Dimensions (HxWxD cm): 185x91x75

Gross / Net Volume: 620 lt./ 526 lt.

Refrigerator / Freezer Net Volume: 362 lt. / 164 lt.

### Standard Features

Convertible Freezer Sections

Touch Screen Electronic Display

Cold Wrap Cooling

DCTE: Double Compressor Twin Evaporators

Superior Internal Illumination

Fresh Zone with Self-Close

Super Quick Freeze & Cool

Economy Mode for Energy Saving

Leveling Feet

### Optional Features

LED Illuminated Handles





# GT/N 916

**Technical Data**

Product Dimensions (HxWxD cm): 185 / 91 / 75  
Gross / Net Volume : 620 lt / 526 lt  
Refrigerator / Freezer Net Volume: 362 lt / 164 lt

**Standard Features**

- Cold Wrap Cooling
- Fresh Zone with Self-Close
- Leveling Feet
- Super Quick Freeze &Cool
- Economy Mode for Energy Saving
- Touch Screen Electronic Display
- Interior LED Lighting

**Optional Features**

- LED Illuminated Handles



 No Frost



## GT/N 911

---

### Technical Data

Product Dimensions (HxWxD cm): 185x91x76

Gross / Net Volume: 645 lt./ 529 lt.

Refrigerator / Freezer Net Volume: 362 lt. / 167 lt.

### Standard Features

Touch Screen Electronic Display

Cold Wrap Cooling

Superior Internal Illumination

Fresh Zone with Self-Close

Super Quick Freeze & Cool

Economy Mode for Energy Saving

Leveling Feet

A+



## GT/N 590 / GT/N 591 / GT/N 585

### Technical Data

Product Dimensions 590(HxWxD cm): 195x76x80

Product Dimensions 591(HxWxD cm):

195x76x75,5

Product Dimensions 585(HxWxD cm):

196,2x76x76

Gross / Net Volume: 585 lt./ 569 lt.

Refrigerator / Freezer Net Volume: 444 lt. / 125 lt.

### Standard Features

- Glass Door ( Only for 590-591 )
- 3D No Frost Cooling System
- Voice Message ( Only for 590 )
- Easy Control Touch Screen Electronic Display
- Reminder & Timer (Only for 590)
- Elegant Internal Led Lighting
- Freshzone
- Super Freezer Compartment
- Economy Mode for Energy Saving
- Holiday Mode
- Ultra Freeze & Cool
- Door Alarm
- Child Lock





## GT/N 6401

### Technical Data

Product Dimensions (HxWxD cm): 182x81x72

Gross / Net Volume: 532 lt./ 498 lt.

Refrigerator / Freezer Net Volume: 394 lt. / 104 lt.

### Standard Features

3D Cooling System

Defrost System: Full Automatic

Quick Freezer Compartment

Fresh Zone

Interior Light in both Fridge and Freezer

Freezer Door Racks

Leveling Feet

Front & Rear Rollers

Egg Holder

Adjustable Shelves

Icematic

### Optional Features

Water Dispenser

Electronic Display

Super Freezer & Cool

Economy Mode for Energy Saving

Holiday Mode

LED Lighting







## GT/N 5401

### Technical Data

Product Dimensions (HxWxD cm): 182x76x68  
Gross / Net Volume: 484 lt./ 457 lt.  
Refrigerator / Freezer Net Volume: 362 lt. / 95 lt.

### Standard Features

Multi-Flow Cooling System  
Defrost System: Full Automatic  
Quick Freezer Compartment  
Fresh Zone  
Interior Light in both Fridge and Freezer  
Freezer Door Racks  
Leveling Feet  
Front & Rear Rollers  
Egg Holder  
Adjustable Shelves  
Icematic

### Optional Features

Electronic Display  
Super Freezer & Cool  
Economy Mode for Energy Saving  
Holiday Mode  
LED Lighting



 No Frost



## GT/N 5652

### Technical Data

Product Dimensions (HxWxD cm):

187,5 / 70 / 75,3

Gross / Net Volume: 501 lt / 439 lt

Refrigerator / Freezer Net Volume: 334 lt / 105 lt

### Standard Features

Cold Wrap Cooling

Fresh Zone

Leveling Feet

Removable Door Racks

Egg Holders

Bottle Racks

Icematic

Front&Rear Rollers

Freezer Door Racks

Interior LED Lighting in both Fridge and Freezer

### Optional Features

Electronic Display

Economy Mode for Energy Saving

Holiday Mode

Super Freezer & Cooler





## GT/N 4651

### Technical Data

Product Dimensions (HxWxD cm): 182x70x68  
Gross / Net Volume: 435 lt./ 412 lt.  
Refrigerator / Freezer Net Volume: 324 lt. / 88 lt.

### Standard Features

Multi-Flow Cooling System  
Defrost System: Full Automatic  
Quick Freezer Compartment  
Fresh Zone  
Interior Light in both Fridge and Freezer  
Freezer Door Racks  
Leveling Feet  
Front & Rear Rollers  
Egg Holder  
Adjustable Shelves  
Icematic

### Optional Features

Electronic Display  
Super Freezer & Cool  
Economy Mode for Energy Saving  
Holiday Mode  
LED Lighting





## GT/N 473

---

### Technical Data

Product dimensions(HxWxD) : 183x70x72  
Gross / Net Volume: 478 /432  
Refrigerator / Freezer Net Volume: 335 / 97

### Standard Features

Fresh Air Flow  
Defrost System: Full Automatic  
Chill Compartment  
Interior Led Lighting in Fridge  
Removable Door Racks  
Freezer Door Racks  
Leveling Feet  
Front & Rear Rollers  
Egg Holder  
Adjustable Shelves  
Clean Back

### Optional Features

Electronic Display  
Interior Led Lighting in Freezer  
Adjustable Icematic  
Wine Shelf





## GT/N 463

### Technical Data

Product dimensions(HxWxD): 173x70x72

Gross / Net Volume: 445 / 400

Refrigerator / Freezer Net Volume: 303 / 97

### Standard Features

Fresh Air Flow

Defrost System: Full Automatic

Chill Compartment

Interior Led Lighting in Fridge

Removable Door Racks

Freezer Door Racks

Leveling Feet

Front & Rear Rollers

Egg Holder

Adjustable Shelves

Clean Back

### Optional Features

Interior Led Lighting in Freezer

Adjustable Icematic

Wine Shelf





## GT/N 485 E

### Technical Data

Product dimensions(HxWxD): 195x70x80

Gross / Net Volume: 530/486

Refrigerator / Freezer Net Volume: 385 / 101

### Standard Features

Multi-Flow Cooling System

Defrost System: Full Automatic

Quick Freezer Compartment

Fresh Zone

Interior Led Lighting in both Fridge and Freezer

Freezer Door Racks

Leveling Feet

Front & Rear Rollers

Egg Holder

Adjustable Shelves

Icematic

Electronic Display

Super Freezer & Cool

Economy Mode for Energy Saving

Holiday Mode

### Optional Features

Water Dispenser

A<sup>++</sup>

A<sup>+</sup>



## GT/N 3702

### Technical Data

Product Dimensions (HxWxD cm): 170x59,5x68

Gross / Net Volume: 341 lt./ 328 lt.

Refrigerator / Freezer Net Volume: 271 lt. / 57 lt.

### Standard Features

Multi-Flow Cooling System

Defrost System: Full Automatic

Leveling Feet

Removable Door Racks

Bottle Racks

Egg Holder

Adjustable Shelves

### Optional Features

Fresh Zone

LED Lighting





## GT/N 466

### Technical Data

Product Dimensions (HxWxD cm): 187,5x70x63,5

Gross / Net Volume: 389 lt./ 357 lt.

Refrigerator / Freezer Net Volume: 260 lt. / 97 lt.

### Standard Features

No Frost

Multi-Flow Cooling System

Defrost System: Full Automatic

Hybrid Control System (Twin Thermostat)

Fresh Zone

Leveling Feet

Rear Rollers

Removable Door Racks

Freezer Drawers

Adjustable Shelves

Egg Holders

### Optional Features

Reversible Doors

Water Dispenser

Electronic Display

Super Freezer & Cool

LED Lighting

Additional Crispers

A++

A+





## GT/N 566

### Technical Data

Product Dimensions (HxWxD cm): 187,5x70x73,5

Gross / Net Volume: 508 lt./ 455 lt.

Refrigerator / Freezer Net Volume: 351 lt. / 104 lt.

### Standard Features

No Frost

Multi-Flow Cooling System

Defrost System: Full Automatic

Hybrid Control System (Twin Thermostat)

Fresh Zone

Leveling Feet

Rear Rollers

Removable Door Racks

Freezer Drawers

Adjustable Shelves

Egg Holders

### Optional Features

Reversible Doors

Water Dispenser

Electronic Display

Super Freezer & Cool

LED Lighting

Additional Crispers





## GT/N 5661

### Technical Data

Product Dimensions (HxWxD cm): 186 / 70 / 73,5

Gross / Net Volume: 486 lt / 437 lt

Refrigerator / Freezer Net Volume: 342 lt / 95 lt

### Standard Features

Cold Wrap Cooling

Fresh Zone

Leveling Feet

Removable Door Racks

Egg Holders

Bottle Racks

Icematic

Front&Rear Rollers

Interior LED Lighting

### Optional Features

Reversible Doors

Electronic Display

Economy Mode for Energy Saving

Holiday Mode

Super Freezer & Cooler





## GT/N 3863

### Technical Data

Product Dimensions (HxWxD cm): 202x59,5x63

Gross / Net Volume: 368 lt./ 330 lt.

Refrigerator / Freezer Net Volume: 258 lt. / 72 lt.

### Standard Features

No Frost

Multi-Flow Cooling System

Defrost System: Full Automatic

Dual Control System (Twin Thermostat)

Fresh Zone

Leveling Feet

Rear Rollers

Removable Door Racks

Freezer Drawers

Adjustable Shelves

Egg Holders

LED Lighting

### Optional Features

Reversible Doors

Electronic Display

Super Freezer & Cool

Economy Mode for Energy Saving

Holiday Mode

Additional Crispers





## GT/N 3663

### Technical Data

Product Dimensions (HxWxD cm): 187x59,5x63

Gross / Net Volume: 334 lt./ 297 lt.

Refrigerator / Freezer Net Volume: 225 lt. / 72 lt.

### Standard Features

No Frost

Multi-Flow Cooling System

Defrost System: Full Automatic

Dual Control System (Twin Thermostat)

Fresh Zone

Leveling Feet

Rear Rollers

Removable Door Racks

Freezer Drawers

Adjustable Shelves

Egg Holders

LED Lighting

### Optional Features

Reversible Doors

Electronic Display

Super Freezer & Cool

Economy Mode for Energy Saving

Holiday Mode

Additional Crispers





## GT/N 366

### Technical Data

Product Dimensions (HxWxD cm): 187 / 59,5 / 63

Gross / Net Volume: 335 lt / 318 lt

Refrigerator / Freezer Net Volume: 231 lt / 87 lt

### Standard Features

- No Frost
- Multi Flow Cooling System
- Defrost System: Full Automatic
- Leveling Feet
- Rear Rollers
- Removable Door Racks
- Freezer Drawers
- Adjustable Shelves
- Egg Holders

### Optional Features

- Reversible Doors
- Electronic Display





## GN 309

### Technical Data

Product Dimensions (HxWxD cm): 170x54x61

Gross / Net Volume: 242 lt./ 214 lt.

Refrigerator / Freezer Net Volume: 147 lt. / 67 lt.

### Optional Features

Reversible Doors

### Standard Features

Frost Free

Defrost System: Full Automatic

Reversible Doors

Leveling Feet

Removable Door Racks

Freezer Drawers

Adjustable Wire Shelves

Egg Holders

Transparent Accessories

A++

A+



## GN 271

### Technical Data

Product Dimensions (HxWxD cm): 152x54x61

Gross / Net Volume: 208 lt./ 184 lt.

Refrigerator / Freezer Net Volume: 124 lt. / 60 lt.

### Standard Features

Frost Free

Defrost System: Full Automatic

Reversible Doors

Leveling Feet

Removable Door Racks

Freezer Drawers

Adjustable Wire Shelves

Egg Holders

Transparent Accessories

### Optional Features

Reversible Doors





## GST/N 171

### Technical Data

Product Dimensions (HxWxD cm): 148x48x56

Gross / Net Volume: 156 lt./ 132 lt.

Refrigerator / Freezer Net Volume: 92 lt. / 40 lt.

### Standard Features

Frost Free

Defrost System: Full Automatic

Leveling Feet

Removable Door Racks

Freezer Drawers

Adjustable Wire Shelves

Egg Holders

Transparent Accessories

### Optional Features

Reversible Doors







## GT 385 / GST/N 380

### Technical Data

Product Dimensions (HxWxD cm): 200x59,5x60

Gross / Net Volume: 362 lt./ 338 lt.

Refrigerator / Freezer Net Volume: 224 lt. / 114 lt.

### Standard Features

Reversible Doors

Single Compressor: GN385

Double Compressor: GN380

Leveling Feet

Rear Rollers

Removable Door Racks

Freezer Drawers

Adjustable Wire Shelves

Egg Holder

### Optional Features

Adjustable Tempered Glass Shelves

Transparent Accessories





## GST/N 3651

---

### Technical Data

Product Dimensions (HxWxD cm): 185x59,5x61,5

Gross / Net Volume: 313 lt./ 290 lt.

Refrigerator / Freezer Net Volume: 209 lt. / 81 lt.

### Standard Features

Single Compressor

Leveling Feet

Rear Rollers

Removable Door Racks

Freezer Drawers

Adjustable Wire Shelves

Egg Holder

Transparent Accessories

### Optional Features

Reversible Doors

Adjustable Tempered Glass Shelves

A++

A+



## GN 350

### Technical Data

Product Dimensions (HxWxD cm): 185x59,5x60

Gross / Net Volume: 324 lt./ 302 lt.

Refrigerator / Freezer Net Volume: 188 lt. / 114 lt.

### Standard Features

- Reversible Doors
- Single Compressor
- Leveling Feet
- Rear Rollers
- Removable Door Racks
- Freezer Drawers
- Adjustable Wire Shelves
- Egg Holder

### Optional Features

- Adjustable Tempered Glass Shelves
- Transparent Accessories





## GN 330

### Technical Data

Product Dimensions (HxWxD cm): 170x59,5x60

Gross / Net Volume: 301 lt./ 279 lt.

Refrigerator / Freezer Net Volume: 188 lt. / 91 lt.

### Standard Features

Reversible Doors

Single Compressor

Leveling Feet

Rear Rollers

Removable Door Racks

Freezer Drawers

Adjustable Wire Shelves

Egg Holder

### Optional Features

Adjustable Tempered Glass Shelves

Transparent Accessories

A+



## GN 308

### Technical Data

Product Dimensions (HxWxD cm): 170x54x61

Gross / Net Volume: 242 lt./ 225 lt.

Refrigerator / Freezer Net Volume: 147 lt. / 78 lt.

### Standard Features

Reversible Doors

Leveling Feet

Removable Door Racks

Freezer Drawers

Adjustable Wire Shelves

Egg Holder

Transparent Accessories

### Optional Features

Adjustable Tempered Glass Shelves





## GN 312

### Technical Data

Product Dimensions (HxWxD cm): 170x54x61

Gross / Net Volume: 251 lt./ 235 lt.

Refrigerator / Freezer Net Volume: 172 lt. / 63 lt.

### Standard Features

Reversible Doors

Leveling Feet

Removable Door Racks

Freezer Drawers

Adjustable Wire Shelves

Egg Holder

Transparent Accessories

### Optional Features

Adjustable Tempered Glass Shelves





## GN 272

### Technical Data

Product Dimensions (HxWxD cm): 152x54x61

Gross / Net Volume: 213 lt./ 198 lt.

Refrigerator / Freezer Net Volume: 152 lt. / 46 lt.

### Standard Features

Reversible Doors

Leveling Feet

Removable Door Racks

Freezer Drawers

Adjustable Wire Shelves

Egg Holder

Transparent Accessories

### Optional Features

Adjustable Tempered Glass Shelves





## GN 270

### Technical Data

Product Dimensions (HxWxD cm): 152x54x61

Gross / Net Volume: 208 lt./ 192 lt.

Refrigerator / Freezer Net Volume: 124 lt. / 68 lt.

### Standard Features

Reversible Doors

Leveling Feet

Removable Door Racks

Freezer Drawers

Adjustable Wire Shelves

Egg Holder

Transparent Accessories

### Optional Features

Adjustable Tempered Glass Shelves







# GN 172

**Technical Data**

Product Dimensions (HxWxD cm): 148x48x56  
Gross / Net Volume: 161 lt./ 148 lt.  
Refrigerator / Freezer Net Volume: 110 lt. / 38 lt.

**Standard Features**

- Reversible Doors
- Leveling Feet
- Removable Door Racks
- Freezer Drawers
- Adjustable Wire Shelves
- Egg Holder
- Transparent Accessories

**Optional Features**

Adjustable Tempered Glass Shelves





## GN 170

### Technical Data

Product Dimensions (HxWxD cm): 148x48x56

Gross / Net Volume: 155 lt./ 143 lt.

Refrigerator / Freezer Net Volume: 92 lt. / 51 lt.

### Standard Features

Reversible Doors

Leveling Feet

Removable Door Racks

Freezer Drawers

Adjustable Wire Shelves

Egg Holder

Transparent Accessories

### Optional Features

Adjustable Tempered Glass Shelves





## GT/N 4561

### Technical Data

Product Dimensions (HxWxD cm): 182x70x63,5

Gross / Net Volume: 420 lt./ 415 lt.

Refrigerator / Freezer Net Volume: 326 lt. / 89 lt.

### Standard Features

Reversible Doors

Leveling Feet

Front and Rear Rollers

Freezer Shelf

Removable Door Racks

Bottle Rack

Adjustable Wire Shelves

Egg Holder

### Optional Features

Turbo Fan-Air Cooling

Adjustable Tempered Glass Shelves

Transparent Accessories

Additional Crisper





## GN 400

### Technical Data

Product Dimensions (HxWxD cm): 180x59,5x60

Gross / Net Volume: 342 lt./ 337 lt.

Refrigerator / Freezer Net Volume: 267 lt. / 70 lt.

### Standard Features

Reversible Doors

Leveling Feet

Rear Rollers

Freezer Shelf

Removable Door Racks

Bottle Rack

Adjustable Wire Shelves

Egg Holder

### Optional Features

Turbo Fan-Air Cooling

Adjustable Tempered Glass Shelves

Transparent Accessories

A+



## GT/N 3451

### Technical Data

Product Dimensions (HxWxD cm): 170x59,5x60

Gross / Net Volume: 310 lt./ 305 lt.

Refrigerator / Freezer Net Volume: 242 lt. / 63 lt.

### Standard Features

Reversible Doors

Leveling Feet

Rear Rollers

Freezer Shelf

Removable Door Racks

Bottle Rack

Adjustable Wire Shelves

Egg Holder

### Optional Features

Turbo Fan-Air Cooling

Adjustable Tempered Glass Shelves

Transparent Accessories





## GT/N 2801

### Technical Data

Product Dimensions (HxWxD cm): 160x54x59,5

Gross / Net Volume: 256 lt./ 253 lt.

Refrigerator / Freezer Net Volume: 211 lt. / 42 lt.

### Standard Features

Reversible Doors

Leveling Feet

Rear Rollers

Freezer Shelf

Removable Door Racks

Bottle Rack

Adjustable Wire Shelves

Egg Holder

### Optional Features

Adjustable Tempered Glass Shelves

Transparent Accessories

A++

A+



## GST/N 2601

### Technical Data

Product Dimensions (HxWxD cm): 144x54x59,5

Gross / Net Volume: 230 lt./ 227 lt.

Refrigerator / Freezer Net Volume: 187 lt. / 40 lt.

### Standard Features

Reversible Doors

Leveling Feet

Rear Rollers

Freezer Shelf

Removable Door Racks

Bottle Rack

Adjustable Wire Shelves

Egg Holder

### Optional Features

Adjustable Tempered Glass Shelves

Transparent Accessories





## GT/N 2301

### Technical Data

Product Dimensions (HxWxD cm): 118x54x59,5

Gross / Net Volume: 175 lt./ 172 lt.

Refrigerator / Freezer Net Volume: 132 lt. / 40 lt.

### Standard Features

Reversible Doors

Leveling Feet

Rear Rollers

Freezer Shelf

Removable Door Racks

Bottle Rack

Adjustable Wire Shelves

Egg Holder

### Optional Features

Adjustable Tempered Glass Shelves

Transparent Accessories







## GT/N 395

---

### Technical Data

Product Dimensions (HxWxD cm): 185x59,5x63

Gross / Net Volume: 353 lt. / 350 lt.

### Standard Features

Reversible Doors

Leveling Feet

Removable Door Racks

Bottle Rack

Adjustable Wire Shelves

Egg Holder

### Optional Features

Electronic Display

Water Dispenser (only for electronic version)

Adjustable Tempered Glass Shelves

Transparent Accessories

Turbo Fan Air Cooling

Additional Crispers





## GT 391 / GT 390

---

### Technical Data

Product Dimensions (HxWxD cm): 185x59,5x63

Gross / Net Volume: GN 390: 286 lt / 258 lt

### Standard Features

GN 390: 286 lt / 265 lt

No Frost Cooling: GN 391

Direct Cooling: GN 390

Electronic Control (GN 391)

Reversible Doors

Leveling Feet

7 Freezer Compartments

Big Box

### Optional Features

Electronic Display

Transparent Accessories





## GT/N 325

### Technical Data

Product Dimensions (HxWxD cm): 155x59,5x63

Gross / Net Volume: 288 lt. / 285 lt.

### Standard Features

Reversible Doors

Leveling Feet

Removable Door Racks

Bottle Rack

Adjustable Wire Shelves

Egg Holder

### Optional Features

Adjustable Tempered Glass Shelves

Transparent Accessories

Turbo Fan Air Cooling





## GT 321 / GT 320

### Technical Data

Product Dimensions (HxWxD cm): 155x59,5x63

Gross / Net Volume: GN 320: 232 lt / 212 lt

### Standard Features

GN 320: 232 lt / 212 lt

No Frost Cooling: GN 321

Direct Cooling: GN 320

Electronic Control (GN 321)

Reversible Doors

Leveling Feet

6 Freezer Compartments

### Optional Features

Transparent Accessories





## GT/N 425

### Technical Data

Product Dimensions (HxWxD cm): 172x70x63,5

Gross / Net Volume: 405 lt. / 381 lt.

Refrigerator / Freezer Net Volume: 341 lt. / 40 lt.

### Standard Features

Reversible Doors

Leveling Feet

Rear Rollers

Removable Door Racks

Bottle Rack

Adjustable Wire Shelves

Egg Holder

Turbo Fan Air Cooling

### Optional Features

Adjustable Tempered Glass Shelves

Transparent Accessories





## GT/N 340

### Technical Data

Product Dimensions (HxWxD cm): 170x59,5x60

Gross / Net Volume: 323 lt. / 311 lt.

Refrigerator / Freezer Net Volume: 281 lt. / 30 lt.

### Standard Features

Reversible Doors

Leveling Feet

Removable Door Racks

Bottle Rack

Adjustable Wire Shelves

Egg Holder

Turbo Fan Air Cooling

### Optional Features

Adjustable Tempered Glass Shelves

Transparent Accessories

A+



## GT/N 2451

---

### Technical Data

Product Dimensions (HxWxD cm): 145,5x54x59,5

Gross / Net Volume: 210 lt. / 182 lt.

### Standard Features

Reversible Doors

Leveling Feet

Freezer Drawers

Quick Freeze Compartment

### Optional Features

Drawers with add-on

Five drawers + 1 flat





## GT/N 265

### Technical Data

Product Dimensions (HxWxD cm): 144x54x59,5

Gross / Net Volume: 253 lt. / 250 lt.

### Standard Features

Reversible Doors

Leveling Feet

Removable Door Racks

Bottle Racks

Adjustable Wire Shelves

Egg Holder

### Optional Features

Adjustable Tempered Glass Shelves

Transparent Accessories







## GT/N 255

---

### Technical Data

Product Dimensions (HxWxD cm): 144x54x59,5

Gross / Net Volume: 230 lt. / 226 lt.

Refrigerator / Freezer Net Volume: 206 lt. / 20 lt.

Star Rating: 

### Standard Features

Reversible Doors

Leveling Feet

Removable Door Racks

Bottle Racks

Adjustable Wire Shelves

Egg Holder

### Optional Features

Adjustable Tempered Glass Shelves

Transparent Accessories





## GT/N 250

### Technical Data

Product Dimensions (HxWxD cm): 123,5x54x56,2

Gross / Net Volume: 206 lt. / 204 lt.

### Standard Features

Reversible Doors

Leveling Feet

Removable Door Racks

Bottle Racks

Adjustable Wire Shelves

Egg Holder

### Optional Features

Adjustable Tempered Glass Shelves

Transparent Accessories





## GN 240

### Technical Data

Product Dimensions (HxWxD cm): 123,5x54x56

Gross / Net Volume: 195 lt. / 192 lt.

Refrigerator / Freezer Net Volume: 175 lt. / 17 lt.

Star Rating: **\*\*\*\***

### Standard Features

Reversible Doors

Leveling Feet

Dairy Compartment

Removable Door Racks

Bottle Racks

Adjustable Wire Shelves

Egg Holder

### Optional Features

Adjustable Tempered Glass Shelves

Transparent Accessories





## GN 140

### Technical Data

Product Dimensions (HxWxD cm): 84x54x59,5

Gross / Net Volume: 119 lt. / 117 lt.

Refrigerator / Freezer Net Volume: 105 lt / 12 lt

Star Rating: \*\*\*\* \*\*

### Standard Features

Reversible Doors

Leveling Feet

Removable Door Racks

Bottle Rack

Adjustable Wire Shelf

### Optional Features

Glass Shelf





## GN 1101

---

### Technical Data

Product Dimensions (HxWxD cm): 84x48x56

Gross / Net Volume: 84 lt. / 81 lt.

Refrigerator / Freezer Net Volume: 73 lt / 8 lt

Star Rating: 

### Standard Features

Reversible Doors

Leveling Feet

Fixed Door Racks

Bottle Rack

Adjustable Wire Shelf

### Optional Features

Glass Shelf





## GT/N 1001

### Technical Data

Product Dimensions (HxWxD cm): 84x48x56

Gross / Net Volume: 90 lt. / 88 lt.

### Standard Features

Reversible Doors

Leveling Feet

Removable Door Racks

Bottle Rack

Adjustable Wire Shelf

### Optional Features

Glass Shelf





## GT/N 1501

---

### Technical Data

Product Dimensions (HxWxD cm): 84x54x59,5

Gross / Net Volume: 107 lt. / 106 lt.

### Standard Features

Reversible Doors

Leveling Feet

Removable Door Racks

Bottle Rack

Adjustable Wire Shelves

### Optional Features

Glass Shelf





## GT/N 1201

### Technical Data

Product Dimensions (HxWxD cm): 84x48x56

Gross / Net Volume: 84 lt. / 82 lt.

### Standard Features

Reversible Doors

Leveling Feet

Fixed Door Racks

Bottle Rack

Adjustable Wire Shelf

### Optional Features

Glass Shelf







## GT/N 1451

### Technical Data

Product Dimensions (HxWxD cm): 84x54x61,5

Gross / Net Volume: 80 lt. / 71 lt.

### Standard Features

Reversible Doors

Leveling Feet

Freezer Drawers

Transparent Freezer Compartments





## GT/N 1151

---

### Technical Data

Product Dimensions (HxWxD cm): 84x48x56

Gross / Net Volume: 73 lt. / 61 lt.

### Standard Features

Reversible Doors

Leveling Feet

Freezer Drawers

Transparent Freezer Compartments



## GT/N 1005

---



### Technical Data

Product Dimensions (HxWxD cm): 84x54x61,5

Gross / Net Volume: 80 lt. / 71 lt.

### Standard Features

Reversible Doors

Leveling Feet

Freezer Drawers

Transparent Freezer Compartments





## GT/N 1002

---

### Technical Data

Product Dimensions (HxWxD cm): 84x48x56

Gross / Net Volume: 73 lt. / 62 lt.

### Standard Features

Reversible Doors

Leveling Feet

Removable Door Racks

Bottle Rack

Transparent Accessories



340 Retro



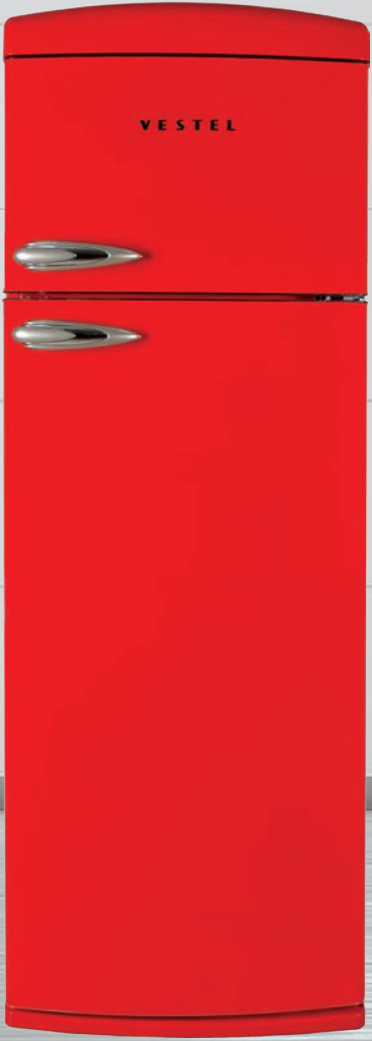
365 Retro



366 Retro



3451 Retro

















Model	SINGLE DOOR												
	390		325	325 TURBO				321E				320	
	B		1	1				B				B	
Refrigerator Class	GT/N (16 °C-43°C)		GN(16°C-32°C)	GSTN(16°C-38°C)		GT/N(16 °C-43°C)		GT/N(16 °C-43°C)				GT/N (16 °C-43°C)	
Climatic Class	A	B	A	A++	A+	B	A++	A+	A	B	A++	A+	A
Energy Class	286	286	288	288	288	288	225	225	225	225	232	232	232
Volume Total(gross)	265	265	285	284	284	284	194	194	194	194	212	212	212
Volume Total(net)	-	-	288	288	288	288	0	0	0	0	-	-	-
Volume Refrigerator (gross)	-	-	285	284	284	284	0	0	0	0	-	-	-
Volume Refrigerator (net)	286	286	-	-	-	-	225	225	225	225	232	232	232
Volume Freezer(gross)	265	265	-	-	-	-	194	194	194	194	212	212	212
Volume Freezer(net)	-	-	-	-	-	-	-	-	-	-	-	-	-
Chiller Volume(net)	4	4	-	-	-	-	4	4	4	4	4	4	4
Performance(star rating)	1,02	1,394	0,459	0,286	0,372	0,657	0,576	0,734	0,952	1,302	0,549	0,699	0,909
Energy Consumption	372	509	168	104	136	240	210	268	348	475	200	255	332
Freezing Capacity	22(32°C) / 26(25°C)	22(32°C) / 26(25°C)	-	-	-	-	16	16	16	16	22(32°C) / 24(25°C)	22(32°C) / 24(25°C)	22
Temperature Rise Time(-18°C to -9°C)	840(32°C) / 960(25°C)	840(32°C) / 960(25°C)	-	-	-	-	510/600	510/600	510	510	1080	1080	1080
Noise Emission	40	43	40	42	40	41	44	43	43	43	43	39	43
Defrost System Type Fridge/Freezer	Manual	Manual	Automatic	Automatic	Automatic	Automatic	Manual	Manual	Manual	Manual	Manual	Manual	Manual
Built in	NO	NO	NO	NO	NO	NO	NO	NO	NO	NO	NO	NO	NO
Product Dimensions(WxDxH)	595x632, 5x1855	595x632, 5x1855	595x632, 5x1555	595x632, 5x1555	595x632, 5x1555	595x632, 5x1555	595x634x1555	595x634x1555	595x634x1555	595x634x1555	595x634x1555	595x634x1555	595x634x1555
Packaged dims (WxDxH) (double-wave carton pack) / standard	664x703x1916	664x703x1916	664x703x1616	664x703x1616	664x703x1616	664x703x1616	664x703x1616	664x703x1616	664x703x1616	664x703x1616	664x703x1616	664x703x1616	664x703x1616
Loading Quantity / 40ft HC	72	72	78	78	78	78	78	78	78	78	78	78	78
Refrigerating Gas	R600a	R600a	R600a	R600a	R600a	R600a	R600a	R600a	R600a	R600a	R600a	R600a	R600a

Model	SINGLE DOOR										
	425	425 TURBO	340		245			2451			
	7	7	7		8			8			
Refrigerator Class	GT/N(16 °C-43°C)		GT/N(16 °C-43°C)		GT/N(16 °C-43°C)		GT/N (16 °C-43°C)			GT/SN (10 °C-43°C)	
Climatic Class	B	A+	A	B	A+	A	B	A++	A+		
Energy Class	405	405	323	323	210	210	210	210	210	210	
Volume Total(gross)	382	381	312	312	182	182	182	182	182	182	
Volume Total(net)	358	358	288	288	0	0	0	0	0	0	
Volume Refrigerator (gross)	342	341	282	282	0	0	0	0	0	0	
Volume Refrigerator (net)	47	47	35	35	210	210	210	210	210	210	
Volume Freezer(gross)	40	40	30	30	182	182	182	182	182	182	
Volume Freezer(net)	-	-	-	-	-	-	-	-	-	-	
Chiller Volume(net)	4	4	4	4	4	4	4	4	4	4	
Performance(star rating)	1,433	0,803	0,932	1,276	0,652	0,854	1,164	0,512	0,652		
Energy Consumption	523	293	340	466	238	312	425	187	238		
Freezing Capacity	2	2	2	2	13(32°C) / 15(25°C)	13(32°C) / 15(25°C)	16	TBD	15		
Temperature Rise Time(-18°C to -9°C)	780	1083	720	720	660(32°C) / 780(25°C)	660(32°C) / 780(25°C)	660(32°C) / 780(25°C)	780	780		
Noise Emission	42	42	43	42	39	39	43	TBD	41		
Defrost System Type Fridge/Freezer	Automatic/Manual	Automatic/Manual	Automatic/Manual	Automatic/Manual	Manual	Manual	Manual	Manual	Manual		
Built in	NO	NO	NO	NO	NO	NO	NO	NO	NO		
Product Dimensions(WxDxH)	700x635, 2x1728	700x635, 2x1728	595x598x1720	595x598x1720	540x595x1440	540x595x1440	540x595x1440	540x595x1455	540x595x1455		
Packaged dims (WxDxH) (double-wave carton pack) / standard	769x702x1791	769x702x1791	664x668x1779	664x668x1779	578x632x1509	578x632x1509	578x632x1509	578x632x1509	578x632x1509		
Loading Quantity / 40ft HC	70	70	74	74	128	128	128	128	128		
Refrigerating Gas	R600a	R600a	R600a	R600a	R600a	R600a	R600a	R600a	R600a		

Model	SINGLE DOOR										
	340 TURBO		255 DB (4*)				245			2451 (DRAFT)	
	7		7				8			8	
Refrigerator Class	GT/SN(10°C-43°C)		GN (16°C-32°C)				GT/N (16°C-43°C)			GT/N (16°C-43°C)	
Climatic Class	A		A				A			A	
Energy Class	A+	A	A+	A	A+	A	B	A++	A+	A+	
Volume Total(gross)	323	323	230	230	210	210	210	176	176	176	
Volume Total(net)	311	311	226	226	186	186	186	150	150	150	
Volume Refrigerator (gross)	288	288	209	209	0	0	0	0	0	0	
Volume Refrigerator (net)	281	281	206	206	0	0	0	0	0	0	
Volume Freezer(gross)	35	35	21	21	210	210	210	176	176	176	
Volume Freezer(net)	30	30	20	20	186	186	186	150	150	150	
Chiller Volume(net)	-	-	-	-	-	-	-	-	-	-	
Performance(star rating)	4	4	4	4	4	4	4	4	4	4	
Energy Consumption	0,718	0,932	0,57	0,738	0,658	0,854	1,169	0,472	0,601	0,601	
Energy Consumption	262	340	208	269	240	312	427	172	219	219	
Freezing Capacity	2	2	2	2	13(32°C)/15(25°C)	13(32°C)/15(25°C)	16	TBD	TBD	TBD	
Temperature Rise Time(-18°C to -9°C)	720	720	800	800	660(32°C)/780(25°C)	660(32°C)/780(25°C)	660(32°C)/780(25°C)	TBD	TBD	TBD	
Noise Emission	43	43	43	42	39	39	43	TBD	TBD	TBD	
Defrost System Type Fridge/Freezer	Automatic / Manual	Automatic / Manual	Automatic / Manual	Automatic / Manual	Manual	Manual	Manual	Manual	Manual	Manual	
Built in	NO	NO	NO	NO	NO	NO	NO	NO	NO	NO	
Product Dimensions(WxDxH)	595x598x1720	595x598x1720	540x595x1440	540x595x1440	540x595x1440	540x595x1440	540x595x1440	540x595x1440	540x595x1440	540x595x1440	
Packaged dims (WxDxH) (double-wave carton pack) / standard	664x668x1779	664x668x1779	578x632x1509	578x632x1509	578x632x1509	578x632x1509	578x632x1509	578x632x1509	578x632x1509	578x632x1509	
Loading Quantity / 40ft HC	74	74	128	128	128	128	128	128	128	128	
Refrigerating Gas	R600a	R600a	R600a	R600a	R600a	R600a	R600a	R600a	R600a	R600a	

Model	SINGLE DOOR													
	265			250			240			1151			1451	
	1			1			7			8			8	
Refrigerator Class	GN (16°C-32°C)			GN (16°C-32°C)			GN (16°C-32°C)			GT/N (16 °C-43°C)			GT/SN (10 °C-43°C)	
Climatic Class	A			A			A			A			A	
Energy Class	A++	A+	A	A+	A	A+	A	A++	A+	A++	A+	A++	A+	A+
Volume Total(gross)	253	253	253	206	206	195	195	73	73	80	80	80	80	80
Volume Total(net)	250	250	250	204	204	192	192	61	61	71	71	71	71	71
Volume Refrigerator (gross)	253	253	253	206	206	178	178	-	-	-	-	-	-	-
Volume Refrigerator (net)	250	250	250	204	204	175	175	-	-	-	-	-	-	-
Volume Freezer(gross)	0	0	0	0	0	17	17	73	73	80	80	80	80	80
Volume Freezer(net)	0	0	0	0	0	17	17	61	61	71	71	71	71	71
Chiller Volume(net)	-	-	-	-	-	-	-	-	-	-	-	-	-	-
Performance(star rating)	-	-	-	-	-	4	4	4	4	4	4	4	4	4
Energy Consumption	0,272	0,348	0,447	0,335	0,431	0,537	0,694	0,358	0,457	0,372	0,474	0,372	0,474	0,474
Energy Consumption	99	127	163	122	157	196	253	130	167	136	173	136	173	173
Freezing Capacity	-	-	-	-	-	2	2	9	9	7,5	7,5	7,5	7,5	7,5
Temperature Rise Time(-18°C to -9°C)	-	-	-	-	-	750	664	510	510	840	840	840	840	840
Noise Emission	42	42	42	40	42	43	43	39	39	43	43	43	43	43
Defrost System Type Fridge/Freezer	Automatic	Automatic	Automatic	Automatic	Automatic	Automatic/Manual	Automatic/Manual	Manual	Manual	Manual	Manual	Manual	Manual	Manual
Built in	NO	NO	NO	NO	NO	NO	NO	NO	NO	NO	NO	NO	NO	NO
Product Dimensions(WxDxH)	540x595x1440	540x595x1440	540x595x1440	540x562,5x1235	540x562,5x1235	540x562,5x1235	540x562,5x1235	480x560x838	480x560x838	540x615x838	540x615x838	540x615x838	540x615x838	540x615x838
Packaged dims (WxDxH) (double-wave carton pack) / standard	578x632x1509	578x632x1509	578x632x1509	578x627x1300	578x627x1300	578x627x1300	578x627x1300	519x587x885	519x587x885	578x632x883	578x632x883	578x632x883	578x632x883	578x632x883
Loading Quantity / 40ft HC	128	128	128	152	152	152	152	270	270	225	225	225	225	225
Refrigerating Gas	R600a	R600a	R600a	R600a	R600a	R600a	R600a	R600a	R600a	R600a	R600a	R600a	R600a	R600a

TABLE TOP												
Model	140 DB (2*)						140 DB (4*)			1101		
Refrigerator Class	140 DB (2*)						140 DB (4*)			1101		
Climatic Class	GT/N (16 °C-43°C)						GN (16 °C-32°C)			GST/N (16 °C-38°C)		
Energy Class	A		A+		A		A+		A++		A+	
Volume Total(gross)	lt	119	119	119	119	119	119	119	84	84	84	84
Volume Total(net)	lt	117	117	117	117	117	117	117	81	81	81	81
Volume Refrigerator (gross)	lt	106	106	106	106	106	106	106	74	74	74	74
Volume Refrigerator (net)	lt	105	105	105	105	105	105	105	73	73	73	73
Volume Freezer(gross)	lt	13	13	13	13	13	13	13	10	10	10	10
Volume Freezer(net)	lt	12	12	12	12	12	12	12	8	8	8	8
Chiller Volume(net)	lt	-	-	-	-	-	-	-	-	-	-	-
Performance(star rating)		2	2	2	4	4	4	4	2	2	2	2
Energy Consumption	kWh/24h	0,445	0,359	0,463	0,464	0,6	0,383	0,171	0,26	0,331	0,335	0,335
Energy Consumption	kWh/year	163	131	169	169	219	140	62	95	121	122	122
Freezing Capacity	kg/24h	-	-	-	-	2	2	2	-	-	-	-
Temperature Rise Time(-18oC to -9oC)	mins	-	-	-	-	615	615	615	-	-	-	-
Noise Emission	dB (A)	41	41	41	41	41	41	41	39	41	41	41
Defrost System Type Fridge/Freezer		Automatic / Manual	Automatic / Manual	Automatic / Manual	Automatic / Manual	Automatic / Manual	Automatic / Manual	Automatic / Manual	Automatic / Manual	Automatic / Manual	Automatic / Manual	Automatic / Manual
Built in		NO	NO	NO	NO	NO	NO	NO	NO	NO	NO	NO
Product Dimensions(WxDxH)	mm	540x595x838	540x595x838	540x595x838	540x595x838	540x595x838	540x595x838	540x595x838	480x560x838	480x560x838	480x560x838	480x560x838
Packaged dims (WxDxH) (double-wave carton pack) / standard	mm	578x632x883	578x632x883	578x632x883	578x632x883	578x632x883	578x632x883	578x632x883	519x587x878	519x587x878	519x587x878	519x587x878
Loading Quantity / 40ft HC	pcs	225	225	225	225	225	225	225	274	274	274	274
Refrigerating Gas		R600a	R600a	R600a	R600a	R600a	R600a	R600a	R600a	R600a	R600a	R600a

TABLE TOP											
Model	1001	1501		1201			1451		1151		
Refrigerator Class	1001	1501		1201			1451		1151		
Climatic Class	GT/N (10°C-43°C)	GT/SN (10 °C-43°C)		GST/N (16 °C-38°C)			GT/SN (10 °C-43°C)		GT/N (16 °C-43°C)		
Energy Class	A+	A+++		A+++			A++		A++		
Volume Total(gross)	91	107	107	84	84	84	80	80	73	73	73
Volume Total(net)	88	106	106	82	82	82	75	75	62	62	62
Volume Refrigerator (gross)	91	107	107	84	84	84	-	-	-	-	-
Volume Refrigerator (net)	88	106	106	82	82	82	-	-	-	-	-
Volume Freezer(gross)	-	-	-	-	-	-	80	80	73	73	73
Volume Freezer(net)	-	-	-	-	-	-	75	75	62	62	62
Chiller Volume(net)	-	-	-	-	-	-	-	-	-	-	-
Performance(star rating)	-	-	-	-	-	-	4	4	4	4	4
Energy Consumption	0,323	0,165	0,315	0,159	0,241	0,307	0,378	0,482	0,362	0,461	0,461
Energy Consumption	118	60	115	58	88	112	138	176	132	168	168
Freezing Capacity	-	-	-	-	-	-	7,5	7,5	9	9	9
Temperature Rise Time(-18oC to -9oC)	-	-	-	-	-	-	840	840	510	510	510
Noise Emission	43	41	41	41	41	41	43	39	39	39	39
Defrost System Type Fridge/Freezer	Automatic / Manual	Automatic	Automatic	Automatic	Automatic	Automatic	Manual	Manual	Manual	Manual	Manual
Built in	NO	NO	NO	NO	NO	NO	NO	NO	NO	NO	NO
Product Dimensions(WxDxH)	480x500x821	540x595x838	540x595x838	480x560x838	480x560x838	480x560x838	540x615x838	540x615x838	480x560x838	480x560x838	480x560x838
Packaged dims (WxDxH) (double-wave carton pack) / standard	519x544x878	578x632x883	578x632x883	519x587x878	519x587x878	519x587x878	578x632x883	578x632x883	519x587x885	519x587x885	519x587x885
Loading Quantity / 40ft HC	274	225	225	274	274	274	225	225	270	270	270
Refrigerating Gas	R600a	R600a	R600a	R600a	R600a	R600a	R600a	R600a	R600a	R600a	R600a

**Vestel Trade Co.**

Organize Sanayi Bölgesi, 45030 Manisa/  
Türkiye **Phone:** 90 - 236 233 25 82  
**Fax:** 90 - 236 233 25 84  
vesteltrade@vestel.com.tr  
www.vestel.com.tr

**Vestel France S.A.**

17 Rue de la Couture-Silic BP 10190-94563  
RUNGIS Cedex/France  
**Phone:** 33 - 1 46 75 00 29  
**Fax:** 33 - 1 41 80 99 31  
p.benhamou@vestel-france.fr

**Vestel Germany GmbH**

Parkring 6 85748 Garching b. München/  
Germany  
**Phone:** 49 - 89 55295 - 0  
**Fax :** 49 - 89 55295 - 2000  
info@vestel-germany.de  
www.vestel-germany.de

**Vestel Iberia**

Avda, Partenon, 16-18 Planta 1 Oficina 6,  
28042 Madrid/Spain  
**Phone:** 34-91 320 63 98  
**Fax:** 34-91 320 52 58  
vestel@vestel.es www.vestel.es

**Gruppo Industriale Vesit SPA**

Via polidoro da Caravaggio, 6, 20156 -  
Milano/Italy **Phone:** +39 02 842 48577  
**Fax:** +39 02 842 48617  
info@givesit.it www.givesit.it

**Vestel UK**

94 Dedworth Road, Windsor, Berks SL4  
5AY/UK **Phone:** 44 - 1753 834 501  
**Fax:** 44 - 1753 834 509  
info@vestel-uk.com

**Vestel Benelux B.V.**

P.O. Box 29179 3001 GD - Rotterdam /  
Netherlands **Phone:** 31 - 10 235 1000  
**Fax:** 31 - 10 235 1003  
info@vestelbenelux.nl  
www.vestelbenelux.nl

**Vestel Scandinavia**

Postikatu 4, FI-04400 Järvenpää / Finland  
**Phone:** +358 46 712 2262  
**Fax:** +358 (0) 9 251 7 8222

**Vestel CIS Ltd.**

1-st Graivoronovsky Proezd, No.20 Building  
16, 109518, Moscow /Russia **Phone:** 7 -  
095 956 8230  
**Fax:** 7 - 095 956 8233  
info@vestel.ru • www.vestel.ru

**Vestel Electronica**

Str Zidarului nr 9-11, Sector 5 Bucuresti, ZIP  
051765 Bucharest/Romania  
**Phone:** 40- 31 425 42 93  
**Fax:** 40-31 425 42 95  
office@vestel.ro • www.vestel.ro

**Vestfrost Household**

Spangsbjerg Mollevej 100, DK-6705  
Esbjerg 0, Denmark  
**Phone:** 45 - 7610 4045  
**Fax:** 45 - 7610 4046

**United Technical Services**

S.R.O. ul. Seneckâ 16, 91101 Samorin,  
Slovakia **Phone:** 421-31 590 27 31  
**Fax:** 421-31 590 27 38  
info@uts.sk • www.uts.sk

**TOO Vestel Central Asia**

Dostyk Avenue, 132 , Office 6, Almaty/  
Kazakhstan **Phone:** + 7 727 262 83 01

**Vestel Poland**

Poleczki 33, 02-822 Warszawa,  
Mazowieckie  
**Phone:** 48 22 2555700  
info@vestel-poland.com

**VESTEL**  
[www.vestel.com.tr](http://www.vestel.com.tr)